



CMU SUMMIT

US-CHINA INNOVATION AND
ENTREPRENEURSHIP FORUM





CMU SUMMIT

US-CHINA INNOVATION AND
ENTREPRENEURSHIP FORUM

2014



APRIL 19-20, 2014
CARNEGIE MELLON UNIVERSITY



A Warm Welcome from the Chair



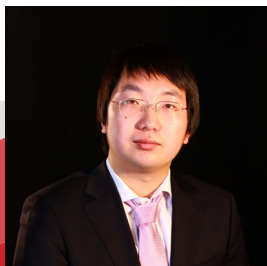
Rui Ma

Founder and Chair
of 2012 Conference



Pengxuan Chen

2013 Conference
Executive Co-Chair



Yue Ma

2014 Conference
Executive Chair

Dear All,

On behalf of the organizing team of CMU Summit on US-China Innovation and Entrepreneurship 2014 Conference, we would like to express our warmest welcome to you. Welcome to our conference, to Carnegie Mellon University and to Pittsburgh.

Debut on April 28, 2012, along with the success of the first two conference, CMU Summit has become an iconic and top tier event in Eastern US. This year, we would like to carry on this achievement and to continue our mission of sharing the emerging challenges in China and the US. Both of the previous first two conferences had huge influence in Carnegie Mellon, locally and regionally, and gained wide media coverage.

This year we are excited to have leading entrepreneurs, company executives, venture capitalists and researchers from both China and the US. They are joining in Carnegie Mellon to address big issues in various domains, such as information technology, finance and capital markets, innovation and entrepreneurship, and energy. We intend to create a bridge between the US and China and further cultivate potential opportunities for future mutual partnerships.

We want to give our special thanks to our speakers, partners and sponsors. Without their great support and contribution, we would not have accomplished so much. We also want to thank our attendees for their interest in our conference. We hope that you will achieve a lot and have a great time here. We wish you every success in your future study and career.

Sincerely,

Yue Ma



CONTENT INDEX

Summit Introduction	1
CMU & Pittsburgh Introduction	2
Agenda	3
Opening Remarks	4
Keynote Speakers	5
Panel Speakers	7
New Venture Competition	15
Summit Team List	17
Partners	19
Sponsors & Media	21





SUMMIT INTRODUCTION

CMU Summit 2014 Conference

CMU Summit on US-China Innovation and Entrepreneurship 2014 Conference is organized by the joint efforts of the CMU Summit Committee, and Chinese Student & Scholars Association at Carnegie Mellon University (CMU-CSSA). The summit will host leading scholars, industry leaders, entrepreneurs, policymakers and venture capitalists from both the US and China to discuss current issues including information technology, finance and capital markets, innovation and entrepreneurship, and energy. The summit is also highlighted by its New Venture Competition, breakout sessions and networking opportunities.

Review of CMU Summit

The first and second CMU Summit were successfully held in 2012 and 2013. They had huge influence and gained wide media coverage.



Over 80 high-profile speakers and experts from different industries presented their insights;



More than 1000 participants from 30 cities across the US attended the conference and involved in the heated discussions;



56 teams brought their intelligent and innovative ideas to the New Venture Competition;



50 media coverage and 12 media partners including CCTV (China Central Television), the most influential media in China; the team was interviewed by WPXI (Our Region's Business - Building Partnerships Between Pittsburgh and China) and KDKA2.



Our Mission



To address emerging challenges in areas where China and the US share common interests and further build up future partnerships.



To involve leading institutions of both China and the US, including Carnegie Mellon University, Pittsburgh region, Pittsburgh local entrepreneurs, Chinese decision and policy makers, and Chinese industry leaders and scholars, in a better mutual understanding.



To provide a great platform for the exchange of ideas about current technological and industrial development among leading scholars, students, industry leaders, entrepreneurs, policymakers, and potential investors from China and the US.



To promote innovation and entrepreneurship at CMU and the Pittsburgh region that will in return improve US-China cooperation.

CMU and Pittsburgh

Carnegie Mellon University (www.cmu.edu) is a private, internationally ranked research university with programs in areas ranging from science, technology and business, to public policy, the humanities and the arts. More than 11,000 students in the university's seven schools and colleges benefit from a small student-to-faculty ratio and an education characterized by its focus on creating and implementing solutions to real problems, interdisciplinary collaboration and innovation. A global university, Carnegie Mellon's main campus in the United States is in Pittsburgh, PA.

Pittsburgh is the second largest city of Pennsylvania and the county seat of Allegheny County. Nationally, it is the 22nd largest urban area in the United States. Pittsburgh is known colloquially as "the City of Bridges" and "the Steel City" for its many bridges and former steel manufacturing base. While the city is historically known for its steel industry, today its economy is largely based on healthcare, education, technology, robotics, and financial services. Major publications often note Pittsburgh's high livability with the city claiming the top overall spot in the United States in recent "most livable city" lists by Places Rated Almanac (2007), Forbes (2010), and The Economist (2011). In 2012, National Geographic named Pittsburgh one of the best worldwide travel destinations.



AGENDA

April 19, 2014		
8:30 am - 9:30 am	Registration University Center	
9:30 am - 10:00 am	Opening Remarks McConomy, University Center	
10:10 am - 10:55 am	Keynote 1 McConomy, University Center	
10:55 am - 11:05 am	Break	
11:05 am - 11:50 am	Keynote 2 McConomy, University Center	
12:00 pm - 1:00 pm	Lunch Talk: Graduating International Students: Your Options in America McConomy, University Center	
1:30 pm - 3:00 pm	Information Technology Panel W.L. Mellon Auditorium	
3:00 pm - 3:30 pm	Break	
3:30 pm - 5:00 pm	Energy Panel W.L. Mellon Auditorium	
6:00 pm - 9:00 pm	Private Dinner (Invited Only)	
April 20, 2014		
10:00 am - 11:30 am	Innovation & Entrepreneurship Panel Giant Eagle Auditorium	Finance & Capital Markets Panel W.L. Mellon Auditorium
11:45 am - 12:45 pm	Wall Street Hedgefund Face to Face Connan Room, University Center	
12:00 pm - 1:00 pm	Meet with Angel Investor Vincent Ma Porter Hall A7E	
1:30 pm - 4:30 pm	New Venture Competition W.L. Mellon Auditorium	
4:30 pm - 5:00 pm	Closing Remarks W.L. Mellon Auditorium	



OPENING REMARKS



Lenore Blum

Co-Director, Center for Innovation and Entrepreneurship
Founding Director, Project Olympus

Lenore Blum (PhD, MIT) is Distinguished Career Professor of Computer Science at Carnegie Mellon and Founding Director of Project Olympus. Lenore is internationally recognized for her work in increasing the

participation of girls and women in Science, Technology, Engineering, and Math (STEM) fields. At Carnegie Mellon she founded the Women@SCS program. In 2004 she received the US Presidential Award for Excellence in Science, Mathematics, and Engineering Mentoring. In 2009 she received the Carnegie Science Catalyst Award recognizing her work with Project Olympus targeting high-tech talent to promote economic growth in the Pittsburgh region and for increasing the participation of women in computer science. On the eve of Alan Turing's 100th birthday in June 2012, she was plenary speaker at the Turing Centenary Celebration at the University of Cambridge, England.



David S. Mawhinney

Co-Director, Center for Innovation and Entrepreneurship
Executive Director Donald H. Jones Center for Entrepreneurship

Prior to joining Carnegie Mellon, Dave was co-founder, Chairman and CEO of mSpoke, an internet content and advertising recommendation engine later acquired by

LinkedIn. In 2006, Morgan Stanley's MSCI/Barra business unit acquired mSpoke's first business line, a quantitative investment recommendation engine. Prior to mSpoke, Dave was a General Partner of PNC Technology Investors. Earlier in his career, he co-founded three successful startup ventures, including Premier Health Exchange (acquired by Medibuy), Hawk Medical (acquired by McKesson), and Industry.Net (merged with AT&T Business Network to form Nets, Inc.). Dave is also an active Board Member at MedSage Technologies (now NewCare Solutions LLC), EZ-FLO Injection Systems, and the Indiana University of Pennsylvania Alumni Association (ex-officio, Past President.). He is an Advisory Board Member to InnovationWork's AlphaLab, Pittsburgh Equity Partners, and Carnegie Mellon University's Project Olympus. Dave also served as Executive-in-Residence at the Pittsburgh Life Sciences Greenhouse working with healthcare information technology start-ups.



KEYNOTE SPEAKERS



Andrew Ng

Co-founder of Coursera

Andrew Ng is a co-founder of Coursera, and a Computer Science faculty member at Stanford. In 2011, he led the development of Stanford University's first MOOC platform, and also taught one of the first MOOCs, a machine learning course offered to over 100,000 students, leading

to the founding of Coursera. Ng's goal is to give everyone in the world access to a great education. Ng has been named to the Time 100 list of the most influential people in the world; to the CNN 10: Thinkers list; Fortune 40 under 40; and being named by Business Insider as one of the top 10 professors across Stanford University. Outside online education, Ng's research work is in machine learning; he is also the Director of the Stanford AI Lab.



KEYNOTE SPEAKERS



Heng Cao

Executive, IBM Research - China Shanghai Lab
Analytics Leader, Technology & Strategy, IBM
Research-Global Labs

Ms. Cao is a Senior Technical Staff Member and heads IBM Research - China Shanghai lab. She also serves as the IBM Research Global Labs' Analytics Leader and leads the cross-geography research teams in developing innovative analytics technologies to address the emerging analytics requirements from Growth Markets. Prior to that, she was on assignment from IBM Watson Research center to IBM China Research Lab as the CTO for business analytics and optimization. Ms. Cao and her team participated in many IBM on demand business transformation projects and successfully helped the business to improve performance through analytics. She was the recipient of many IBM awards including the IBM Outstanding Technical Achievement. She also received the 2008 National Women of Color Rising Star Award and the 2010 INFORMS (Institute for Operations Research and the Management Sciences) Daniel H. Wagner Prize.



PANEL SPEAKERS

IT Panel *Information and Technology*



Data Fusion in Everyday Life

Data has evolved into our everyday life. It could be collected from everywhere and any time. This brings us to an era of data fusion. In this era, technology is used in a variety of ways to improve our lives. Wearable devices that capture every move we make can be controlled easily; online educations that teach millions of students per hour can improve their efficiency by collecting and analyzing data on their previous services; moreover, data enables Internet finance to process thousands of transactions which we make profit from in as short as one second.



Randal E. Bryant

Moderator

Dean, School of Computer Science
University Professor of Computer Science

Randal E. Bryant is an American computer scientist and is well known for his research on verifying digital hardware and software. He is Dean of Carnegie Mellon University's School of Computer Science, where he has taught since 1984. Bryant's 1986 paper on symbolic Boolean manipulation using Ordered Binary Decision Diagrams (BDDs) has the highest citation count of any publication in the Citeseer database of computer science literature. In addition, he has developed several techniques to verify circuits by symbolic simulation, with levels of abstraction ranging from transistors to very high-level representations.



Andrew Moore

Vice President - Engineering, Google

Andrew Moore, Vice President of Engineering, is the Site Director for Google Pittsburgh and an Engineering Lead for Google's efforts in Ads. Google Pittsburgh is an engineering office with responsibilities for core machine learning and systems technology behind many of Google's advertising quality systems. It is also the home of the numerical and statistical approaches for Google Shopping. Prior to joining Google in January 2006, Andrew was a Professor of Robotics and Computer Science at the School of Computer Science, Carnegie Mellon University. Andrew began his career writing video games for an obscure British personal computer. He rapidly became a thousandaire and retired to academia, where he received a PhD from the University of Cambridge in 1991. He researched robot learning as a Postdoc working with Chris Atkeson, and then moved to CMU.



Peng Yang

Chief researcher, Hitachi (China) Research and Development Corporation

Mr. Peng Yang is chief researcher in Hitachi (China) R&D Corporation. Mr. Yang was elected as the vice chair of TC3-WG1 in China Communication Standard Association for 2010 and 2011. In 2011, he became the chair of TWG-2 in the Ubiquitous Network Technology and Development Forum, and served on organizational committee of the China Cloud Partnership Project as a board member.



Heng Cao

Executive, IBM Research - China Shanghai Lab
Analytics Leader, Technology & Strategy, IBM Research-Global Labs

Ms. Cao is a Senior Technical Staff Member and heads IBM Research - China Shanghai lab. She also serves as the IBM Research Global Labs' Analytics Leader. Prior to that, she was on assignment from IBM Watson Research center to IBM China Research Lab as the CTO for business analytics and optimization. She was the recipient of many IBM awards including the IBM Outstanding Technical Achievement. She also received the 2008 National Women of Color Rising Star Award and the 2010 INFORMS Daniel H. Wagner Prize.



Bruce Cullen

Vice President, Strategy,
Innovation and Architecture at Mylan

As the vice president of innovation and architecture at Mylan, Mr. Cullen is responsible for finding inventive ways to leverage information technology to set new standards in health care and providing 7 billion people access to high quality medicine. One of his earlier notable achievements was the introduction of an internal social business platform for Mylan. Mr. Cullen earned a bachelor's degree in computer science from West Virginia University and an MBA from Waynesburg University. He also is a certified Project Management Professional.



John Jiang

Senior Research Architect, Hitachi America Ltd

Dr. Jiang is a Senior Research Architect at Hitachi America Ltd. Over the last two years, he has been doing R&D in various IT fields. Prior to joining Hitachi, Dr. Jiang worked for Dell as the lead solution architect of data center transformation. He also served as an executive enterprise & information architect for IBM GBS. Prior to that, Mr. Jiang worked at the National Synchrotron Light Source of Brookhaven National Lab where he made significant contribution to the discovery of the Top Quark in 1994.



PANEL SPEAKERS

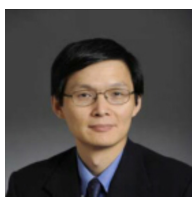
Finance & Capital Markets Panel



Chinese Companies Overseas Expansion and Investments

Finance & Capital Markets Panel convenes business leaders, venture capitalists, and renowned scholars to provide expert analysis on the current investment environment in China and issues concerning investing in the Chinese companies. In addition, the panel presents a networking event with Wall Street professional, Mr. George Cao, who is currently the Founder and the Chief Investment Officer of Delpha Capital Management. The series of events underscores the Panel's commitment to better inform investors about China's capital markets and investing opportunities, to foster idea exchange on cutting-edges finance issues concerning both China and the U.S., and to provide a platform for companies and individuals from both countries to form business relationships. Topics of this year's panel discussion include:

- Global investors entering China's capital markets: Opportunities, Challenges and Risks
- Investing in Chinese stocks traded on NYSE and NASDAQ
- How potential changes in financial regulations could affect investors
- Innovations in financial instruments and the related risk control measures

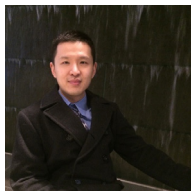


Pierre Jinghong Liang

Moderator

Associate Professor
Carnegie Mellon University, Tepper School

Professor Pierre Jinghong Liang is an Associate Professor of Accounting at the Tepper School of Business, Carnegie Mellon University. He also has a research affiliation with China Academy for Financial Research (CAFR) and Shanghai Advanced Institute of Finance (SAIF). His research interests are accounting theory and information economics. Professor Liang's academic research has won AAA Management Accounting Section (MAS)'s Best Paper at the Annual Meeting Award in 2009 and his teaching has won the "Excellence in the Classroom" teaching award at the Tepper School of Business, 2007-2008. His professional services outside Carnegie Mellon include serving the American Accounting Association (AAA) on its various committees including the research advisory committee and serving the Chinese Accounting Professors Association of North America (CAPANA) as an officer.



George Cao

Chief Investment Officer Delpha Capital Management

Mr. George Cao is currently the Founder and the Chief Investment Officer of Delpha Capital Management, New York. Delpha Capital specializes in trading equity, ETF and commodity future products in all major exchanges across the globe. Before founding Delpha Capital, Mr. Cao worked at the Equity Division of Barclays Capital in both the New York and the London offices. During that period, he oversaw equity electronic trading in the U.S., European and Asian markets. Prior to Barclays, he researched and traded U.S. equity as a Portfolio Manager at Knight Capital Group. Before coming to the U.S., Mr. Cao studied Computer Science in the University of Science and Technology of China. He earned his PhD degree from the University of Chicago.



Gordon Liu

Managing Director, HSBC

Dr. Gordon Liu is currently the Managing Director of HSBC North America, heading both the Regulatory and Risk Analytics Division and the Wholesale Credit and Market Risk Division. He is responsible for developing and implementing the risk and regulatory capital models to monitor the market and credit risks involved in the investment banking and commercial banking transactions. In this capacity, he is also responsible for communicating with regulators in the U.S. and Canada to ensure HSBC's compliance with regional regulations and capital rules. Prior to joining HSBC, Dr. Liu was a market risk model developer and manager at Citi Group and Merrill Lynch, responsible for VaR model development and systems implementation, after spending three years in the telecommunication industry. Dr. Liu received his undergraduate and master degrees from Huazhong University of Science and Technology, Wuhan, China, and a Ph.D. in electrical and systems engineering from University of Connecticut.

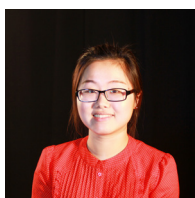


PANEL SPEAKERS

Innovation and Entrepreneurship Panel

At the Intersection of Innovation and Business

Innovation is the fundamental development of a country, upon which, China will be able to persist and maintain a long-term economic growth in the future. This year, we will bring together the entrepreneurs, industry leaders and investors in both China and US to discuss the recent hot topics on "International expansion and investment strategies", "Leveraging next generation technology" and "Innovation and commercialization ecosystem in China and US", etc. We will discuss solutions to questions such as "What is the research and commercialization infrastructure and ecosystems in US and China?" "How's current capital market – China to US and US to China?" "What are the opportunities of financing start-up companies in both China and US?" "What are the international expansion strategies of some corporations in China?" and "What could be the next generation technology and how to leverage the emerging market?"



Pengxuan Chen

Moderator

Advisor, CMU Summit 2014 Conference
Chair, CMU Summit 2013 Conference

Jacqueline Pengxuan Chen is a CMU alumna now working full-time at Michael Baker International. She assisted Rui Ma, founder of CMU Summit, in founding the conference from 2011 to 2012. She chaired 2013 conference and is proactively involved in 2014 Conference. She witnessed the thriving of Chinese community at Carnegie Mellon University since 2010 and has an enrich understanding of US-China collaboration. In addition to her specialization in construction and engineering, she is interested in venture capital, entrepreneurship, business development and disruptive technology.



Charles Kim

Managing Director, China Renaissance

Mr. Kim is the managing director at China Renaissance in the firm's Securities Group, where he is responsible for the equities sales, trading and distribution in the US. Prior to Mirae Asset, where he was the head of sales in Seoul, Mr Kim was the head of sales for Lehman Brothers Korea, which followed a period at Deutsche Bank in New York, where he worked in sales with responsibility Pan Asia. In addition, Mr. Kim has worked for JP Morgan and Jardine Flemings as a Asian specialist.



Vincent Ma (Angel Laoma)

Senior Vice President, Mashington Group

Angel LaoMa (Vincent Ma) is an angel investor and serial entrepreneur with 20 years of business experience. He also helps startups as a financial adviser, strategy adviser, MBA mentor, or even as a co-founder. In addition, Mr.Ma is the president of Mashington China, which is an investment company with a focus on value investing in both China and the US. Furthermore, he is the co-chairman of Blue Angles Startups & Investments Community, co-founder of China Startups & Incubators Alliance, and the vice chairman of China Grassroots Angel Investors Group.



Michael Smolens

Founder & Chairman, Dotsub Collector of Puzzle Pieces

Mr. Smolens is a recognized leader in the language services, global media, and technology industries. He has worked in several corporations, and was a mentor for the Thiel 20under20 Foundation. Mr. Smolens founded Dotsub in 2007, to solve the problem of “removing language as a barrier to cross cultural communication using video”. Later on, Dotsub became the leading cloud based, one-stop, self contained system for creating time coded captions of video in any of the world's languages, and then translated subtitles into scores of languages.



Lisa Delp

Former Executive Director, Ohio Third Frontier Commission

Ms.Delp is an expert in entrepreneurship. Serving as a technology entrepreneur and the executive director of the Ohio Third Frontier Commission, she works to develop dynamic communities engaged in a unified vision for the economic prosperity through innovation. In March 2013, Lisa joined Lorain County Community College as the director, and a founding member of the leadership team for Innovation Fund America, a non-profit organization. Lisa works internationally with various organizations to help build the sound financial systems needed to support robust market economies in transitional and developing countries.



PANEL SPEAKERS

Energy Panel: *Finite Resources, infinite Energy*

Energizing the World, Fueling the Future

The Energy Panel discussion will provide a variety of perspectives that foster dialogues on subjects including upcoming tenergy technological innovation for traditional and non-traditional energy, development of next generation clean energy, opportunities and challenges faced by energy industry as well as government regulation and policy in both countries. The panel aims to provide a platform for exchanging ideas, promoting business opportunities and enhancing connections among stakeholders in energy industry from both countries. Potential topics this year will cover:

- Bilateral collaboration in energy industry, such as shale gas drilling, nuclear energy and renewable energy development
- Technology innovation and sustainable development
- Opportunities and challenges faced by energy industry
- Services strategy design
- Energy policy



Louis Schwartz

Moderator

President, Chinese Strategy LLC
Professor, University of Pittsburgh School of Law

Mr.Schwartz, a lawyer and China specialist who is fluent in Mandarin Chinese, is the president of China Strategies LLC. He provides clients research & analytical, due diligence, merger & acquisition, and equity investment services. In addition, Mr. Schwartz supports on a wide range of matters that involve China's economical issues, with a particular emphasize on China's burgeoning energy and metals sectors. Mr. Schwartz earned degrees in East Asian Studies from University of Michigan and Harvard University where he studied Chinese language & literature, economics and law, among other disciplines. Mr.Schwartz also earned a J.D. from George Washington University Law School. For more than 10 years Mr. Schwartz has taught classes at the University of Pittsburgh School of Law and its College of Arts and Sciences, including Law and Development in China, Chinese for Lawyers and Chinese Legal Documents.



Mark Desantis

CEO, kWantera

Mark is the CEO of kWantera, a venture funded real-time energy management company. As an entrepreneurial leader, he has also co-founded a number of technology businesses and serves as a director to others. In addition, he is an adjunct professor at CMU and has been a frequent lecturer and published author on general management, strategy, and entrepreneurship. Mark holds a BA and MBA from the University of Dayton, an MS in Technology Management from the American University and a PhD in Public Policy from George Mason University. Mark is active in the western Pennsylvania region including serving on the boards of several local non-profits.



Kevin Sheen

Senior Director, EverPower Wind Holdings

As the senior development & public affairs director and a co-founder of EverPower Wind Holdings, Mr. Sheen plays key roles in several of corporation's operating and development projects, especially wind and solar ones in the Northeast and Midwestern United States. In addition, Mr. Sheen directs the community relations and public affairs efforts at EverPower. Furthermore, Mr. Sheen serves as the chairman of the Board of Directors of the Alliance for Clean Energy New York, a non-profit lobbying and advocacy group focused on advancing clean technologies in New York State. He earned a Bachelor of Arts degree from Indiana University, a Master's Degree from the Ohio State University.



Ritchie Tabachnick

President at Equipment & Controls Africa Vice President at Breen Energy Solutions

Ritchie Tabachnick has more than 37 years of experience in the energy industry. He has concentrated on business development and management of companies involved in the energy business outside of the US for the past 19 years. He is currently serving in two roles; as President of E&C Africa Group, a service company focused on the energy industry in Africa, and as Vice President of Breen Energy Solutions, a company focused on clean coal combustion technology. In his position at Breen Energy, Mr. Tabachnick is responsible for the company's business in Asia. Mr. Tabachnick holds B.Eng. and M.Eng. degrees from McGill University in Canada.



NEW VENTURE COMPETITION

Introduction

The New Venture Competition is one of the core sessions of CMU Summit. The Competition aims to build a communication platform for ambitious Chinese and American students. It also strives to bridge the gap between the resources for entrepreneurs and the ability of the entrepreneurial ecosystem in place to provide them. The Competition is a platform for identifying, nurturing and showcasing emerging entrepreneurs in and out the city of Pittsburgh. In this year's competition, we got strong support from SoftBank China, IDG Ventures, Dragon Gate Investment, Sierra Ventures, UCTID as well as academic and industrial field. 52 teams from top universities in Greater Pittsburgh Area and all over the US participated in the New Venture Competition, among which top 10 teams from MIT, Columbia University, CMU, Purdue University, JHU, etc. got into the final round competition.

Judge List



Vincent Ma (Angel Laoma)

Senior Vice President, Mashington Group

Angel LaoMa (Vincent Ma) is an angel investor and serial entrepreneur with 20 years business experiences. He also helps startups as a financial adviser; strategy adviser and/or MBA mentor, even as a co-founder. Mr. Ma is also the Co-Chairman of Blue Angles Startups & Investments Community (BASIC), Co-Founder of China Startups & Incubators Alliance (CSIA) and Vice Chairman of China Grassroots Angel Investors Group (GAIG). Mr. Ma has been traveling extensively and investing aggressively in Beijing, Shanghai, Guangzhou, Shenzhen of China, Chicago, New York and Silicon Valley in the past 5 years. Angel LaoMa has worked for OfficeMax Inc., a Fortune 500 company, with responsibilities of strategic planning and M&A deals. He also worked for Deloitte Touché at its Chicago office. Mr. Ma was the youngest Project Manager promoted at Inchcape, another Fortune 500 company, in 1995. He is the board director of 10 companies in the US and China. Mr. Ma was awarded MBA degree from DePaul University in 2000.



Charles Kim

Managing Director, China Renaissance

Mr. Kim is the managing director at China Renaissance in the firm's Securities Group, where he is responsible for the equities sales, trading and distribution in the US. Prior to Mirae Asset, where he was the head of sales in Seoul, Mr Kim was the head of sales for Lehman Brothers Korea, which followed a period at Deutsche Bank in New York, where he worked in sales with responsibility Pan Asia. In addition, Mr. Kim has worked for JP Morgan and Jardine Flemings as a Asian specialist.



Michael Smolens

Founder & Chairman, Dotsub Collector of Puzzle Pieces

Mr. Smolens is a recognized leader in the language services, global media, and technology industries. He has worked in several corporations, and was a mentor for the Thiel 20under20 Foundation. Mr. Smolens founded Dotsub in 2007, to solve the problem of "removing language as a barrier to cross cultural communication using video". Later on, Dotsub became the leading cloud based, one-stop, self contained system for creating time coded captions of video in any of the world's languages, and then translated subtitles into scores of languages.



Lisa Delp

Former Executive Director, Ohio Third Frontier Commission

Ms. Delp is an expert in entrepreneurship. Serving as a technology entrepreneur and the executive director of the Ohio Third Frontier Commission, she works to develop dynamic communities engaged in a unified vision for the economic prosperity through innovation. In March 2013, Lisa joined Lorain County Community College as the director, and a founding member of the leadership team for Innovation Fund America, a non-profit organization. Lisa works internationally with various organizations to help build the sound financial systems needed to support robust market economies in transitional and developing countries.



2014 CMU SUMMIT TEAM

Rui Ma: Founder and Chair of 2012 Conference

Pengxuan Chen: Conference Advisor, 2013 Conference Executive Co-Chair

Bowen Gui: Conference Advisor, 2013 Conference Vice Chair

Yue Ma: 2014 Conference Executive Chair, 2013 Conference Vice Chair

Zhenhao Hua: Vice Chair

Mingyang Song: Vice Chair

Secretaries

Qiren Wang
Xiaoxiao Lei

Sponsor Relations

Xiao Huang: Director
Yinan Wang: Associate Director
Taichong Ma: Associate Director
Funan Ma
Mingyang Song
Xiaoxiao Lei
Xue Bai

Competition

Zhenhao Hua: Director
Mingyang Song
Xiaobo Hu
Tengfei Qiao
Chenjie Zhao
Siyu Chen
Pengqi Liu
Haohan Wang
Qiulei Bao
Chi Zhang
Yue Zhao

Public Relations & Marketing

Ran You: Director, Media Relations
Danning Xu
Qiren Wang
Zhuoming Chen
Di Fang

Human Resource

Jia Wan: Director
Bing Zhou

Tech/Design

Xiaoyue Wang: Creative Director
Siqi Tan: Tech Director
Zekun Li: Design Director

Operation

Bing Zhou: Co-Director
Renjie Li: Co-Director
Funan Ma: Associate Director
Jia Wan
Danni Zhang
Biao Ma: Consultant
Xiaowei Zhu: Consultant



Speaker/Panels

Information Technology

Haohan Wang: Director
Siyu Chen: Associate Director
Chenjie Zhao: Associate Director
Zhenhao Hua
Weiyi Dai
Chi Zhang
Siqi Tan
Tengfei Qiao
Xiaobo Hu
Shanghang Zhang
Xiaochen Zhang
Biao Ma: Consultant

Finance & Capital Markets

Danning Wang: Director
Jia Wan: Associate Director
Yinghao Wang
Yinan Wang
Xiaoyu Zhang
Dong Lin

Energy

Bing Zhou: Director
Di Fang: Associate Director
Xin Ning: Associate Director
Huangqiang Zhao: Advisor
Xian Shui
Qiren Wang
Renjie Li
Yuling He

Innovation & Entrepreneurship

Qiren Wang: Director
Ge Zhang
Zhenhao Hua
Xiaoyu Zhang
Siqi Tan



PARTNERS



Blue Angels Ventures



Mashington Group



Columbia CSSA



SVIEF



PTC

pittsburgh regional alliance

PRA



Carnegie Mellon University
Center for Innovation and Entrepreneurship



Grass Roots Angel Investor Club
草根天使会



Legal Advisor
Jesse Chen, Attorney-at-Law



中国创业咖啡联盟 · CSIA
—— 中国创业服务机构合作平台 ——





SPONSORS & MEDIA

Diamond Sponsor



Gold Sponsor



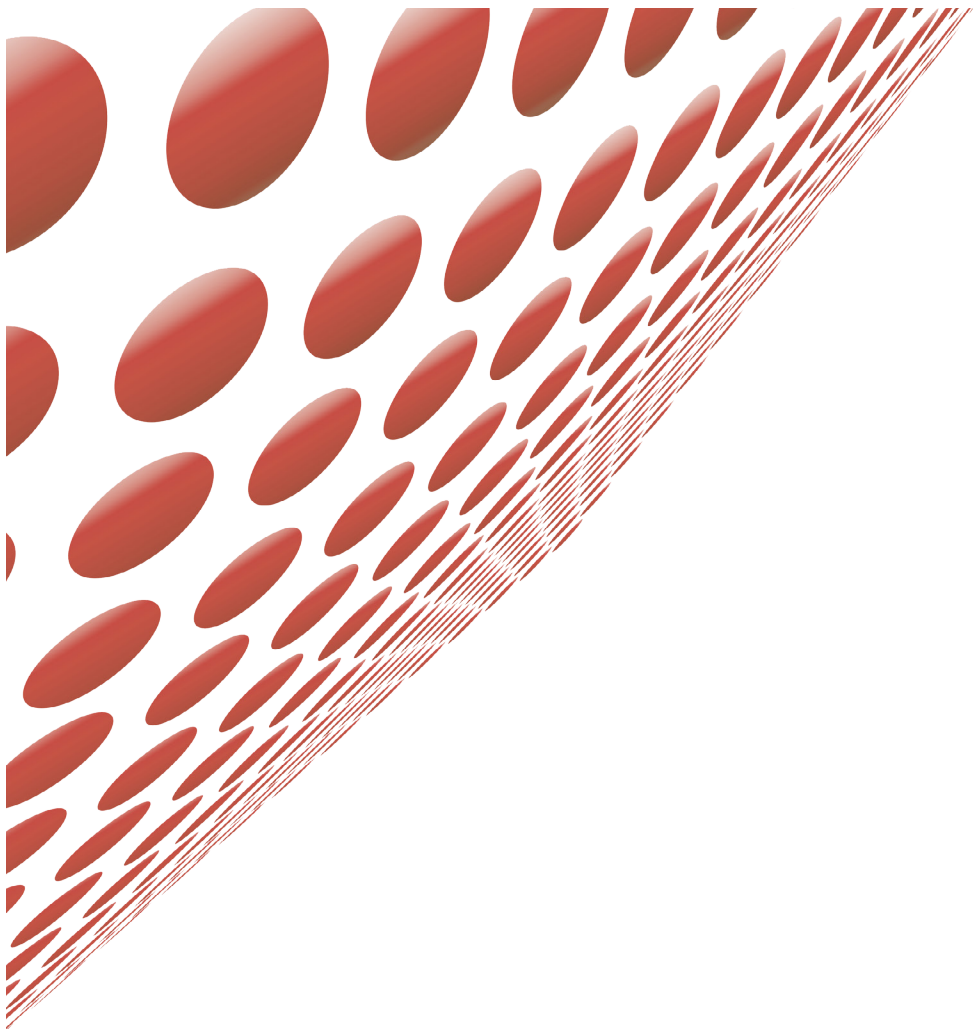
Division of Student Affairs

Silver Sponsor

CMU Student Government

Media





CMU Summit
April 19-20, 2014
Carnegie Mellon University, Pittsburgh, PA

Designed by
Suzy Li
Xiaoyue Wang
Qiren Wang